



Sajiran
office furniture & partition

GAMA
Partition system

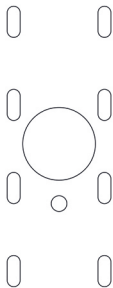




GamaSystem

Gama Short Partition (GLH)

This style is used to classify spaces such as banks. In this style, the partition is not in the line of sight, and is usually used to determine the space of each space.





Gama System

Textures



Outstanding white



Sync black



Logano



Mesh



Gentoo



Branko



Fido



Polar

Solid colors



Cappuccino



Matte Black



Matte Charcoal

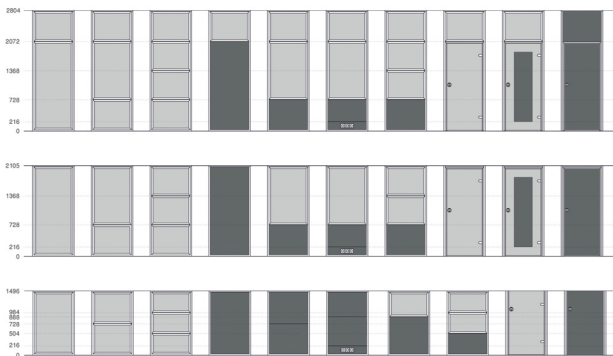


Matte white

Metal colors

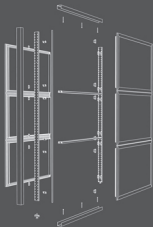


Silver anodized



Aluminum profiles with annealed alloy 6063 (hardened with heat treatment) with anodized coating of more than 15 microns and allophilic electroplating materials in Germany.

The matt **anodized** profile (natural color of aluminum) is standard, and bronze anodized (shampoo) and electrostatic powder colors are available on request.



EXPLOSIVE VIEW



Gama System



Sajiran
office furniture & partition



In the partition, cellulosic fillers and aluminum frames with glass are used. Also, by using the shutters that are placed inside the partition, the light environment can be most used.



Sajiranco



www.sajiran.com